

BRAKE ACCESSORIES

Magnetek's heavy-duty, cost-effective Mondel brake product line is designed for industrial applications including overhead cranes, conveyors, hoists, bridges, turntables, fans, and winches. Our versatile brake accessories and finishing services enhance our high quality brakes to meet your unique application needs and simplify installation.

BRAKE WHEELS

Angled, offset, and coupled brake wheels are available for 200S General Purpose Industrial Brakes and 300M AIST Mill Duty Brakes. Choose a brake wheel with a finished bore that is ready to install right on your equipment, saving time and labor, or select a cost-effective rough-bore option you can finish on-site. Magnetek can also provide dynamically balanced wheels to reduce equipment vibration.

Coupled brake wheels are useful in situations where space is limited. These geared, flexible couplings eliminate the need for costly, double-shaft extensions on motors and gear boxes, and are pre-assembled to ensure an easy fit.

FEATURES

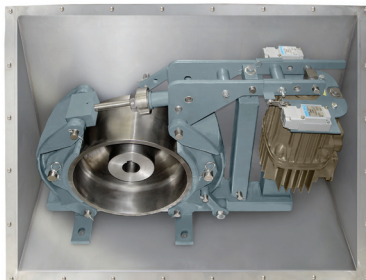
- Manufactured from durable ductile-iron alloy
- Completely machined to provide proper balance at normal operating speeds
- Resistant to scoring
- Wears smoothly and evenly
- Offers superior torque
- High thermal conductivity — dissipates heat from brake pads resulting in longer pad life

ENCLOSURES

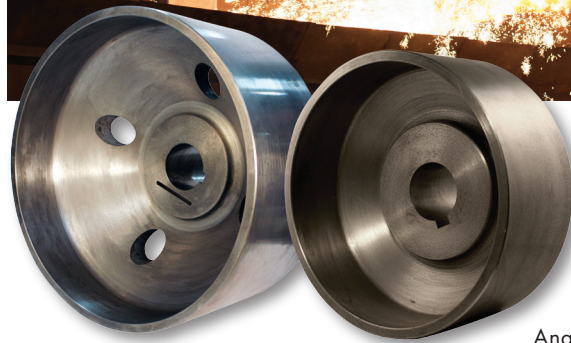
Magnetek brakes can be installed into protective brake enclosures, which guard against damage from dust and moisture and retain heat.

FEATURES

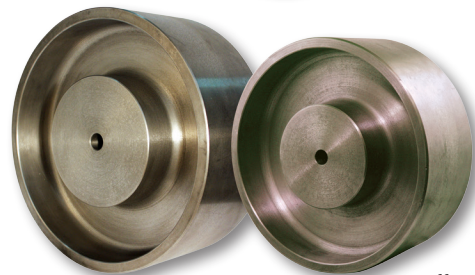
- Manufactured from stainless steel
- NEMA 3R standard
- NEMA 4X available



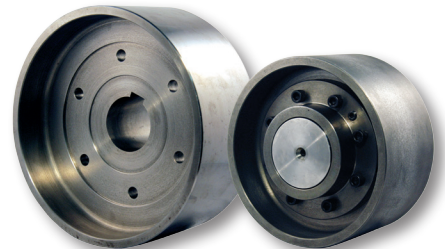
Brake Enclosure



Angled Brake Wheels



Offset Brake Wheels



Coupled Brake Wheels



MAGNETEK
MATERIAL HANDLING

MONDEL

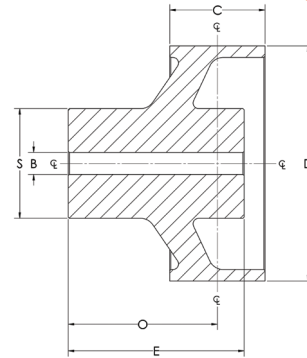
YOUR ONE-STOP SOURCE FOR MATERIAL HANDLING CONTROL SOLUTIONS

BRAKE WHEEL SPECIFICATIONS

ANGLED BRAKE WHEELS

OD (D)	OD WIDTH (C)	WEIGHT (LBS)	WK ² (LB-FT ²)	MAX RPM	HEAT DISSIPATION (FT. LB/HOUR)
5 ⁽¹⁾	2.75	16	0.32	8,000	1,000,000
8	3.25	32	1.34	5,000	1,800,000
10	3.75	47	3.51	4,000	2,500,000
13	5.75	115	14	3,300	4,200,000
16	6.75	160	35	2,600	6,000,000
19	8.75	220	74	2,300	8,500,000
23	11.25	333	131	1,900	13,000,000
30	14.25	1,046	755	1,340	21,000,000

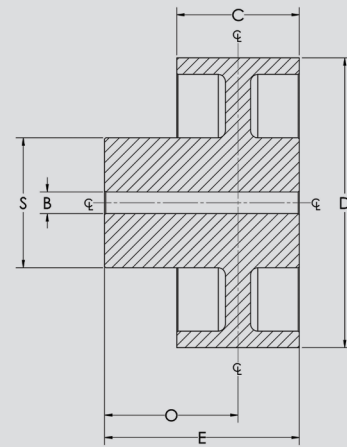
⁽¹⁾Note: AIST/NEMA does not define a 5" brake wheel | For further dimensions see technical manual



OFFSET BRAKE WHEELS

OD (D)	OD WIDTH (C)	WEIGHT (LBS)	WK ² (LB-FT ²)	MAX RPM	HEAT DISSIPATION (FT. LB/HOUR)
4	2.25	10	0.12	9,000	810,000
6	3.25	16	0.46	6,700	1,400,000
8	4.25	41	1.95	8,000	2,000,000
10	4.25	59	4.44	5,000	2,600,000
12	5.25	84	8.85	4,000	3,600,000
13	5.75	114	14	3,400	4,100,000
15	6.75	196	30	3,300	5,400,000
16	6.75	219	39	2,700	5,800,000
19	8.75	370	96	2,300	8,400,000
23	11.25	584	223	1,900	12,000,000
30	14.25	1,176	731	1,340	21,000,000

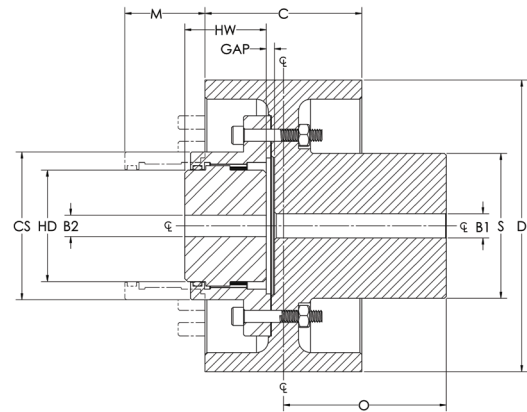
For further dimensions see technical manual



COUPLED BRAKE WHEELS

OD (D)	OD WIDTH (C)	WEIGHT (LBS)	WK ² (LB-FT ²)	MAX RPM
6	3.25	19	0.51	6,700
8	4.25	39	1.66	8,000
10	4.25	49	3.43	5,000
12	5.25	86	9.14	4,000
13	5.75	92	12.02	3,400
15	6.75	150	25.96	3,300
16	6.75	194	35.7	2,700
19	8.75	327	86.43	2,300
23	11.25	549	22.97	1,900
30	14.25	1,028	683.34	1,340

For further dimensions see technical manual



For more information, contact Magnetek Material Handling or your local Magnetek Sales Representative.



MAGNETEK
MATERIAL HANDLING

MONDEL

WWW.MAGNETEKMH.COM

N49 W13650 Campbell Drive
Menomonee Falls, WI 53051
Toll-Free Phone 800.288.8178
Toll-Free Fax 800.298.3503
Phone 262.783.3500
Fax 262.783.3510

MH638_Brake Accessories Brochure
© Magnetek, Inc. 2016

2/16